

# Doc M Pack / Concealed Shower

TSL.DDA.SHW.001

A minimalistic stainless steel shower kit that offers DDA Doc M compliance for hospitality, end-of-journey, wellness, and other commercial applications. The coordinating products are available in four PVD colors as well as brushed satin.

**All taps and accessories from The Splash Lab are fully compatible with the Concept Washroom range. By specifying directly with us, you gain exclusive project pricing, expert guidance from our specification team, and dedicated support from start to finish.**

| Finish   | Codes              | LRV* |
|----------|--------------------|------|
| ● Satin  | TSL.DDA.SHW.001.CS | 58   |
| ● Black  | TSL.DDA.SHW.001.BK | 3    |
| ● Brass  | TSL.DDA.SHW.001.BR | 40   |
| ● Copper | TSL.DDA.SHW.001.CP | 19   |
| ● Bronze | TSL.DDA.SHW.001.BZ | 17   |

Light Reflectance Value\*



## About

---

The TSL.DDA.SHW.001 includes all products listed below and ensures full compliance with Approved Document Part M of the Building Regulations. All products have been designed in conjunction with each other to ensure a consistent and co-ordinated aesthetic. The set is delivered as a single package to ease the onsite installation process.

---

## Products Included

---

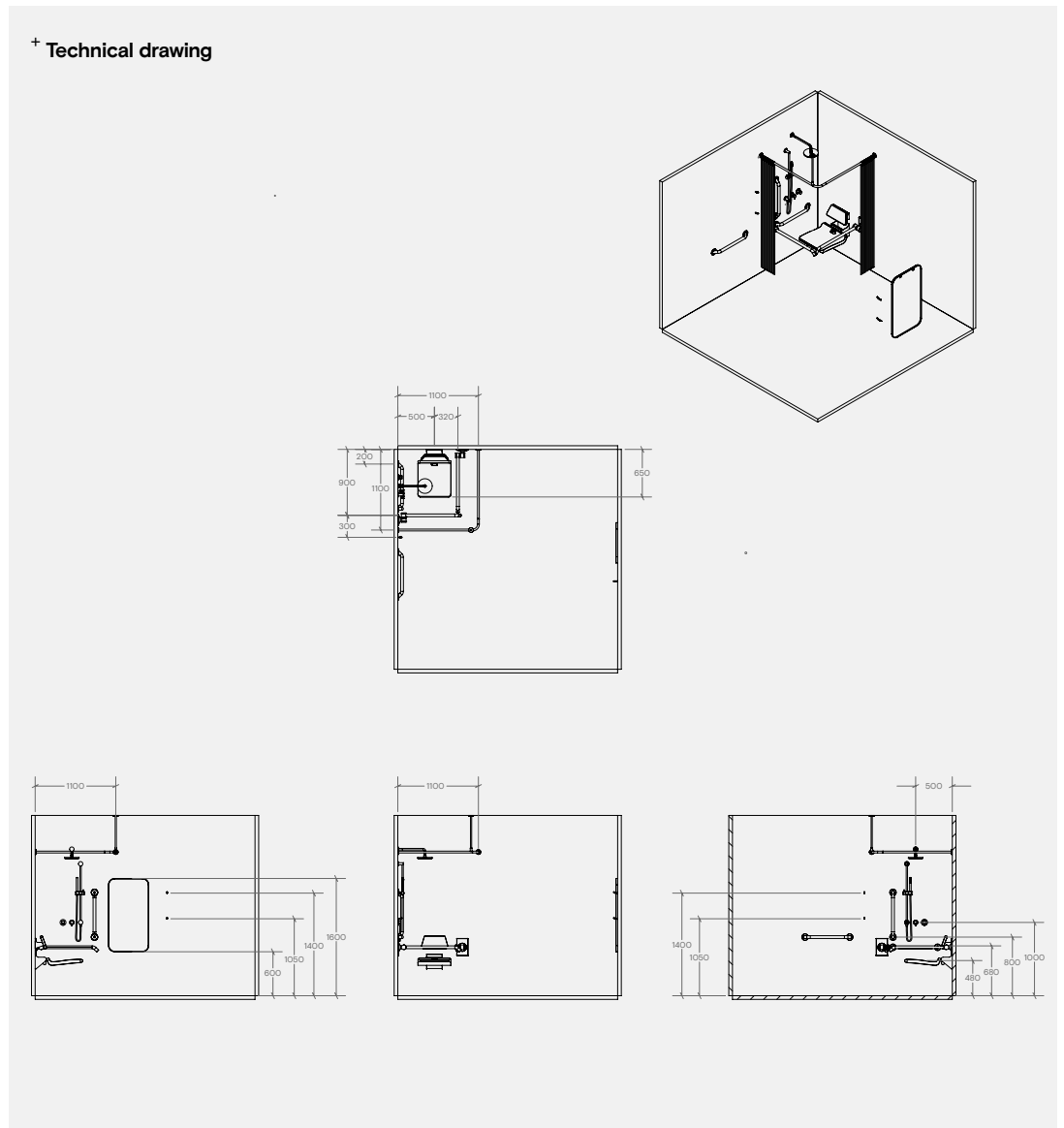
|    |              |  |
|----|--------------|--|
| 1x | TSL.SHW.011  | Concealed Shower   |
| 1x | TSLP.2515    | Shower curtain rail (fixed ceiling stay) - 2x shower curtains<br>Shower curtain hooks (Pack of 24) |
| 1x | TSLP.2511    | 650mm Projection Shower Seat   |
| 1x | TSLP.2512    | Shower Seat Backrest   |
| 1x | TSL.SZPC     | DDA Single Zone Assistance Kit   |
| 2x | TSL.GR45     | Hinged Grab Bar (1x RH & 1x LH)  |
| 3x | TSL.GR45.600 | Straight Grab Bar - 600mm  |
| 4x | TSL.974      | Coat/Robe Hook   |
| 1x | TSL.MR20     | Wall Mounted Mirror / Rectangular  |

---

## Key Components/Spare Parts

Doc M Pack / Concealed Shower  
TSL.DDA.SHW.001

## + Technical drawing

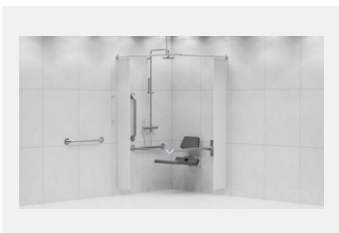


## Warranty & Spare Parts

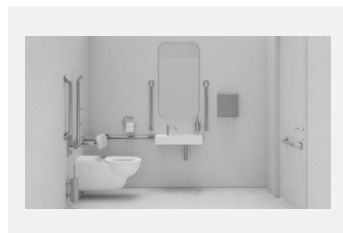
For warranty terms and conditions please visit [www.thesplashlab.com](http://www.thesplashlab.com)

If additional spare parts are required and are not listed above, please contact us at [info.uk@thesplashlab.com](mailto:info.uk@thesplashlab.com)

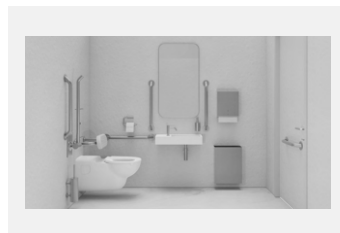
## Related Products



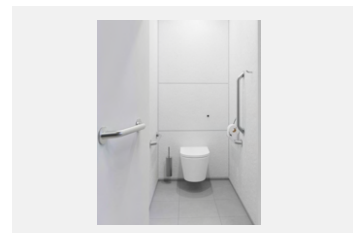
**DDA Doc M Pack / Exposed Shower**  
TSL.DDA.SHW.002



**DDA Doc M Pack / Wall Hung WC / Hand Dryer**  
TSL.DDA.R1



**DDA Doc M Pack / Wall Hung WC / Paper Towel**  
TSL.AMB.R2



**Doc M Ambulant Pack / Wall Hung WC / Straight Grab Bar**  
TSL.AMB.R1